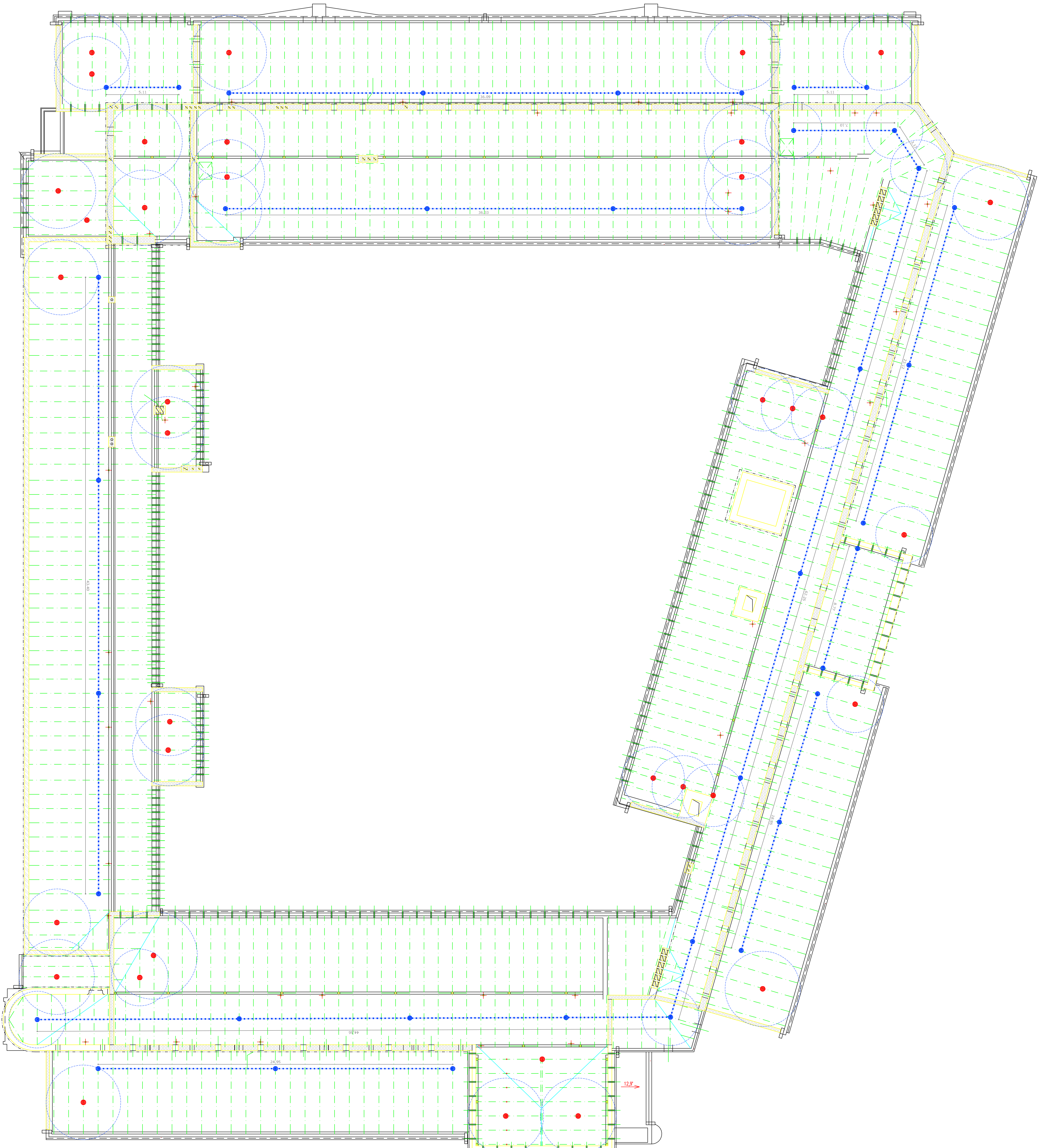


EN 795 ANCHOR DEVICE SYSTEM PROJECT

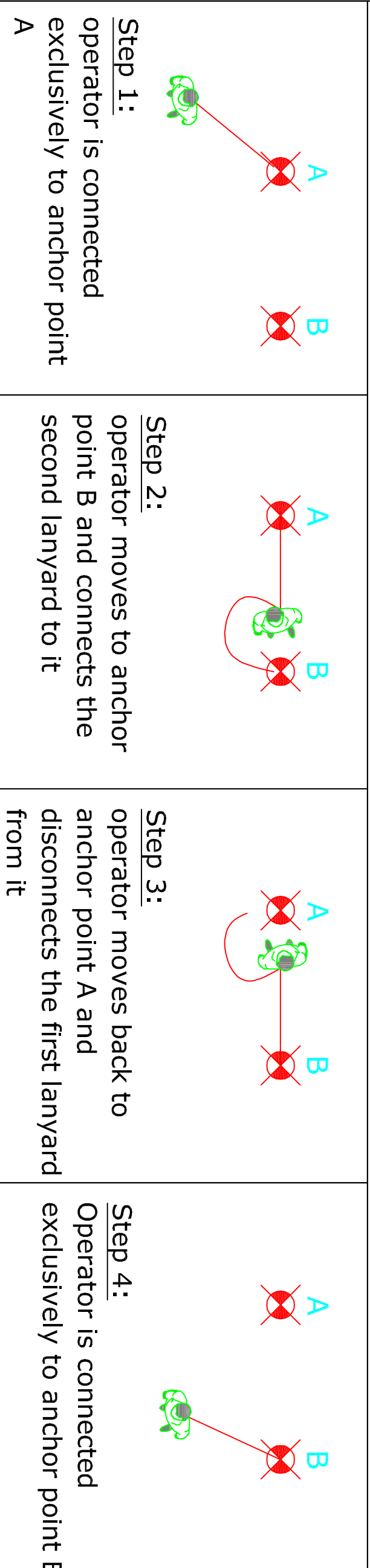
REQUESTER:
REFERENCE:
OUR PROTOCOL: 57419DP
ISSUE DATE:
DRAFTED BY:

THIS PROJECT WAS DRAFTED FOR COMMERCIAL PURPOSES. THIS DESIGN DOES NOT REPLACE THE ILLUSTRATIVE REPORT OF A QUALIFIED AND EXPERIENCED TECHNICIAN OR THE SAFETY MANAGER OF THE WORKS IN QUESTION.

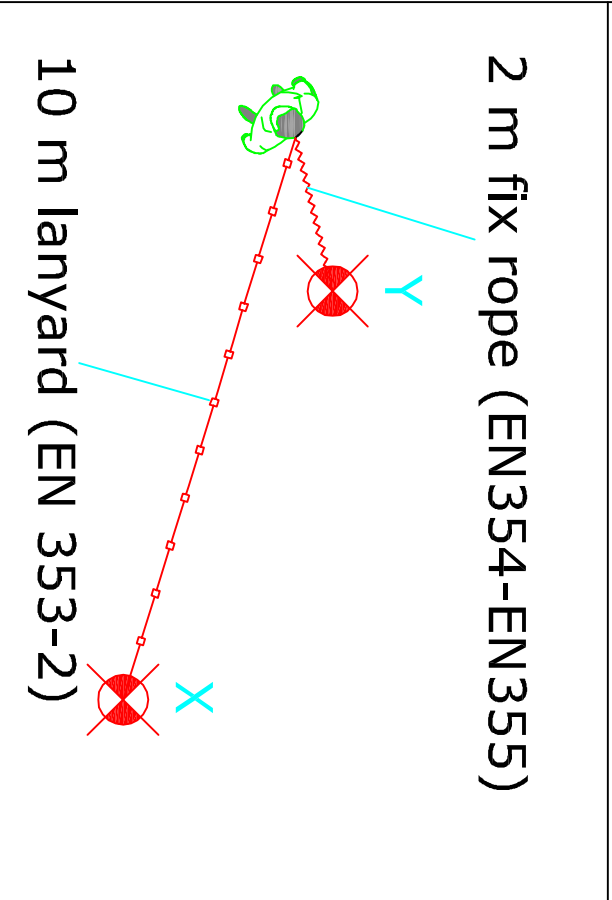
Access to the roof	
	<b>Life Line</b> Horizontal flexible anchor line system PATROL Max 4 Persons capacity In accordance with EN 795/C:2012, CEN/TS 16415:2013 and UNI 11578/C:2015 tested in all fall directions Installation on: concrete, wood, steel with TOWER support
	<b>Single anchor point</b> Anchor point TOWER + AOS01 Max 4 Persons capacity In accordance with EN 795/A:2012, CEN/TS16415:2013 and UNI 11578/A:2015 tested in all fall directions Installation on: wood, concrete and steel Material: zinc-plated steel
Products	



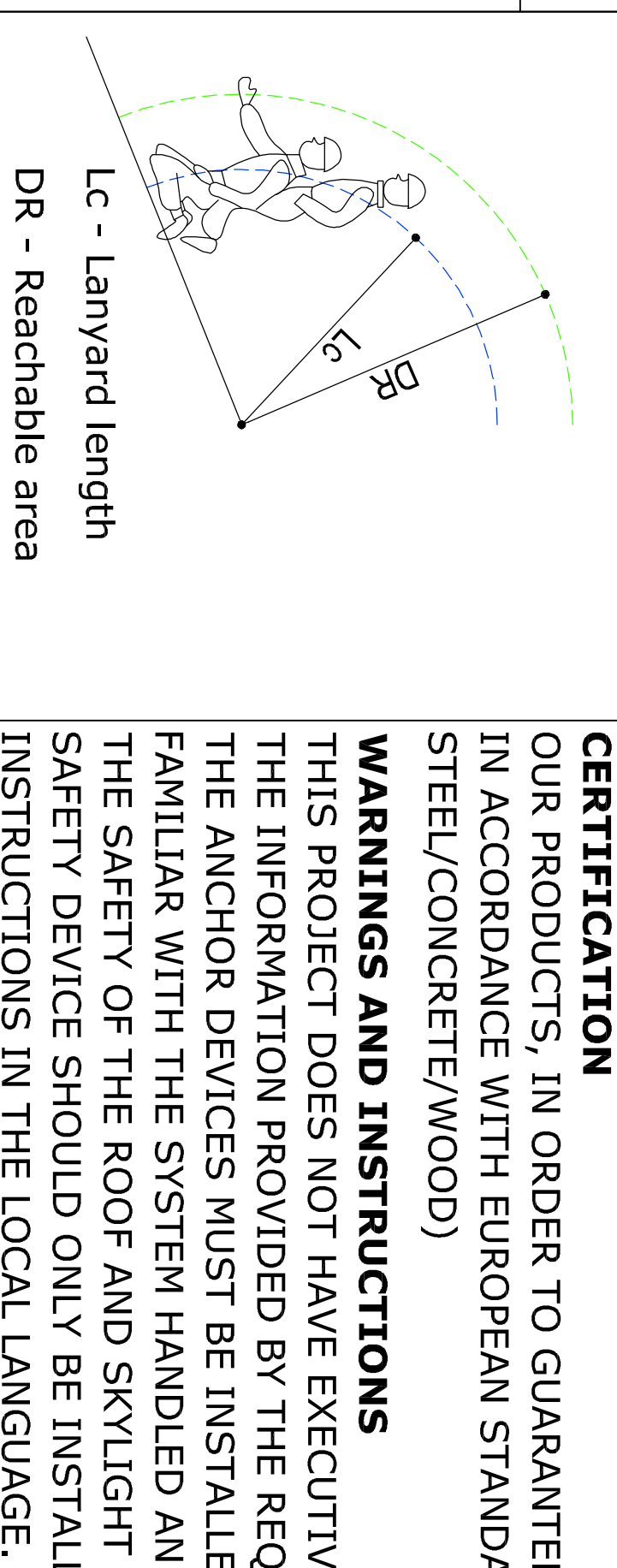
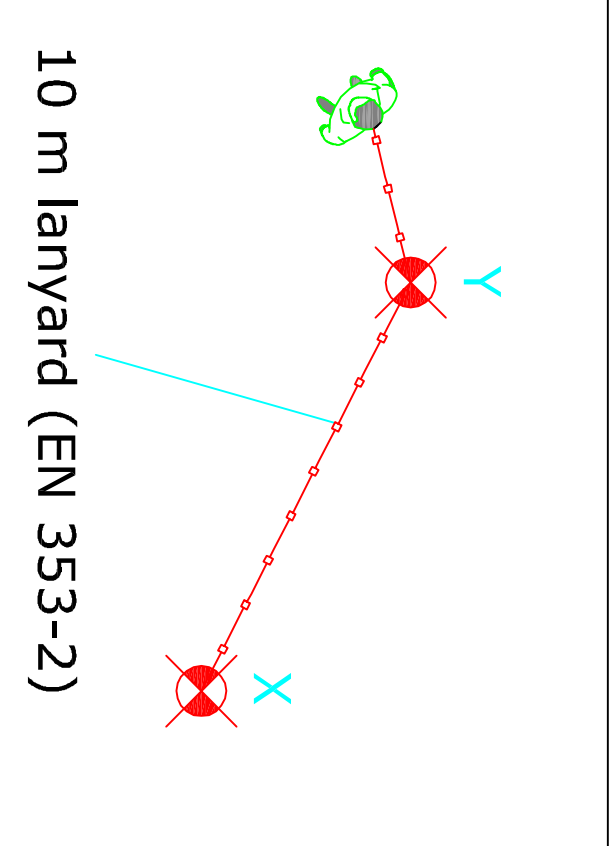
METHOD OF MOVEMENT BETWEEN TWO ELEMENTS EN 795 TYPE A



WORK METHOD - FIX ROPE



WORK METHOD - ROPE DEVIATION



**CERTIFICATION**  
OUR PRODUCTS, IN ORDER TO GUARANTEE GREATER RELIABILITY FOR THE END USER, ARE CERTIFIED BY AN EXTERNAL CERTIFYING BODY IN ACCORDANCE WITH EUROPEAN STANDARD EN795. TESTED AS PER THE MANUAL ON THE VARIOUS STRUCTURES (E.G. STEEL/CONCRETE/WOOD)

**WARNINGS AND INSTRUCTIONS**  
THIS PROJECT DOES NOT HAVE EXECUTIVE VALUE BUT WAS DRAFTED FOR COMMERCIAL PURPOSES. THE DESIGN WAS DRAFTED BASED ON THE INFORMATION PROVIDED BY THE REQUESTER AND DOES NOT REPLACE THE GRAPHIC DRAWING DRAFTED BY A TECHNICAL EXPERT. THE ANCHOR DEVICES MUST BE INSTALLED AND POSITIONED AT THE HIGHEST TRADE STANDARDS BY SUITABLE, EXPERT PERSONNEL FAMILIAR WITH THE SYSTEM HANDLED AND WITH THE INSTRUCTIONS FOR USE IN CONFORMITY WITH CURRENT TECHNICAL STANDARDS. THE SAFETY OF THE ROOF AND SKYLIGHT ACCESS POINTS MUST BE ACHIEVED SEPARATELY (IF NOT FORESEEN IN THE DESIGN). THE SAFETY DEVICE SHOULD ONLY BE INSTALLED AND USED ONCE THE FITTER AND USER HAVE READ THE INSTALLATION AND USER INSTRUCTIONS IN THE LOCAL LANGUAGE.